



**B53  
BLUELIFT**

ReachMaster launched the Bluelift line in North America in 2010, and since then this line of track-based compact aerial lifts has continued to set one record after another:

The first manufacturer in the world to

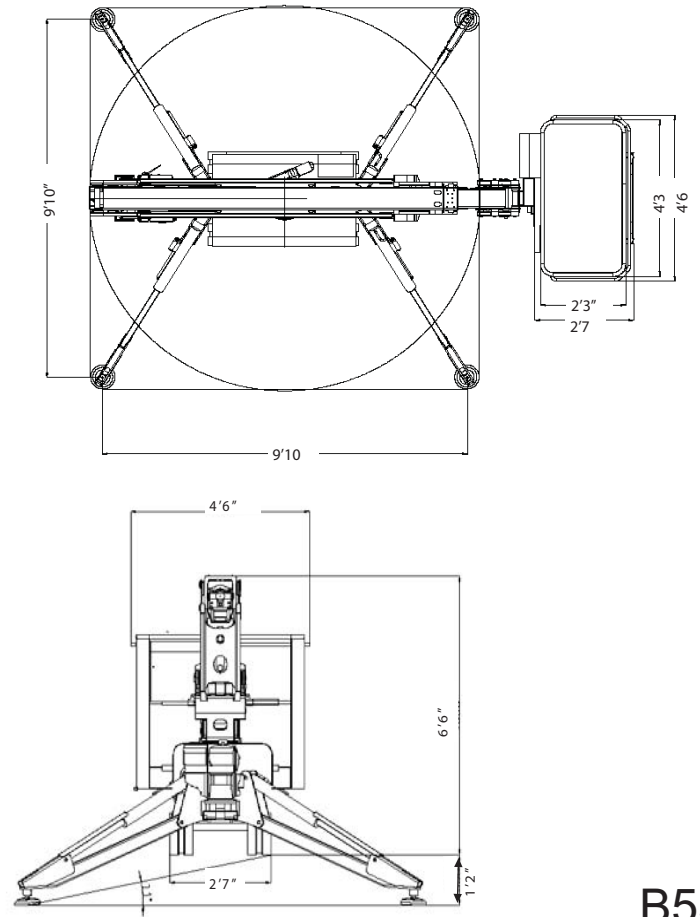
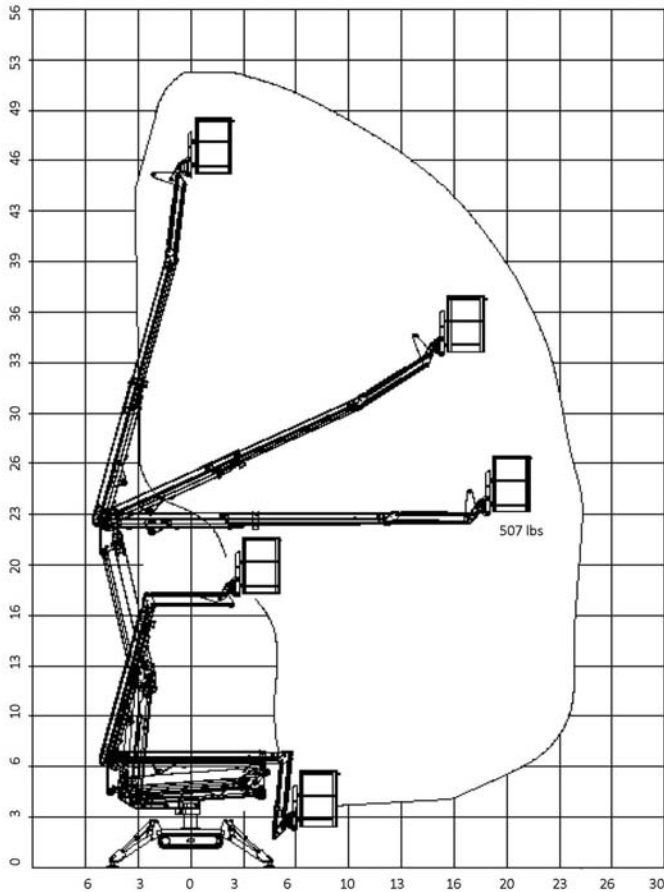
- offer a 72 ft. work height unit with an overall length of less than 15 ft
- feature a true hybrid option with combined lithium and combustion engine in this class of units
- offer the most narrow units in its class
- auto centering of boom, go-home features and many more operator aid functions

The latest new feature is an innovative electro-hydraulic system that will allow the operator to use two independent functions at the same time.

With working heights from 35 – 101 ft., single and double door access combined with hybrid power solutions, the Bluelift line offers an unmatched range of versatile lifts that can be used in- and outdoor. Applications such as general rental, window cleaning, building maintenance and tree care are just a few of the many tasks where the Bluelift line will offer a superior, safer and more efficient solution.

| <b>Model</b>            | <b>B53</b>         |
|-------------------------|--------------------|
| Working height          | 52' 6"ft           |
| Basket height           | 47ft               |
| Max outreach            | 24ft3in (507 lbs)  |
| Basket load             | 507lbs             |
| Basket dims             | 4ft3in x 2ft3in    |
| Basket rotation         | +/-90°             |
| Turret rotation         | 340°               |
| Height                  | 6ft6in             |
| Length (w/o basket)     | 12ft3in            |
| Length (w/ basket)      | 14ft5in            |
| Width (w/o basket)      | 2ft7in             |
| Footprint               | 9ft10 in x 9ft10in |
| Weight (approx)         | 4,190 lbs          |
| Max pressure, tracks    | 8.3psi             |
| Max pressure, footplate | 65.4psi            |
| Track size (per track)  | 44in x 6½in        |
| Foot pad size (per pad) | 48½sq in           |
| 110V drive motor        | Standard           |
| Honda, iGX390           | Standard           |
| Hatz diesel engine      | Option             |
| Lithium battery         | Option             |

We reserve the right to alterations



## B53 BLUELIFT

### Standard Equipment

- Automatic stability & outreach control
- 180° (+/-90°) basket rotation
- Non marking tracks
- Air/water to the basket
- 110V to basket
- Self propelled
- 110V drive motor
- Honda iGX390 engine
- 340° non cont. turret rotation
- Manual pump for emergency lowering
- Width of only 2ft7in
- 2 person basket
- Cable Remote Control
- Automatic turret center stop

### Optional Equipment

- Adjustable tracks
- Hatz diesel engine
- Lithium Battery
- Hetronic radio remote
- Go-home function
- Custom paint

### Additional Specifications

|                    |          |
|--------------------|----------|
| Boom angle         | 0°/ +75° |
| Oil tank capacity  | 8gal     |
| Max windspeed      | 28mph    |
| Operating speed    | 0.9mph   |
| Travel speed       | 0.9mph   |
| Drive gradability  | 15°/28%  |
| Set-up gradability | 10°/18%  |



Ruthmann Reachmaster N.A. LP  
Toll Free: 866-358-7088  
[www.ruthmannreachmaster.com](http://www.ruthmannreachmaster.com)